

DB1 Advanced Quick user guide

Follow the steps in this guide before you install the tracker



1 LOCATE THE IMEI NUMBER

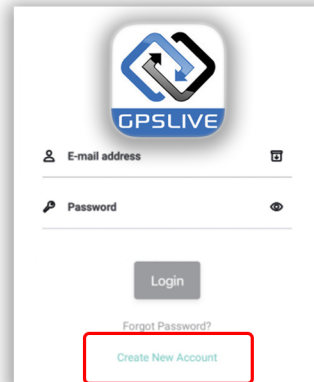


The IMEI number will be printed on the box.

If you are an existing user, log in to your GPSlive account and continue to step number 5.

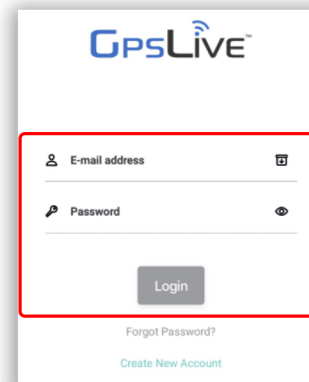
If you have purchased a device with subscription (service top-up) continue to step number 8.

2 REGISTER YOUR ACCOUNT



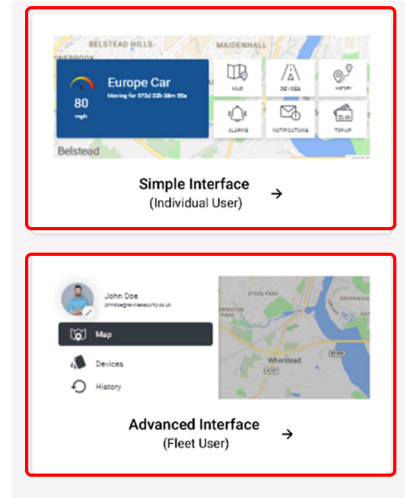
Download the GPSLIVE app from the Apple App Store or Google Play store. Open the app and tap on "Create New Account". Enter your email address and tap on "Register".

3 ACCESS YOUR ACCOUNT



Check your email inbox/spam for an email from GPSLIVE which will contain your username and password. Open the GPSLIVE app and log in using the username and password provided in the email.

4 SELECT YOUR INTERFACE



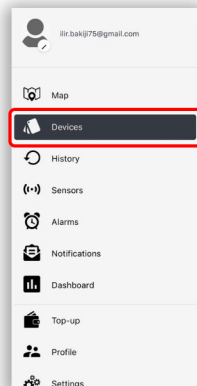
This can be changed in settings at any time.

5 ADD YOUR DEVICE

Advanced Interface

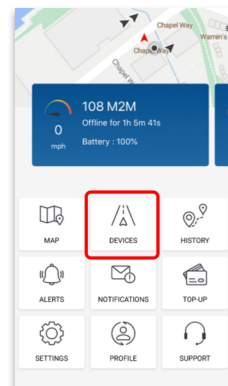


Tap on menu button in the top left corner



Tap on Devices

Simple Interface

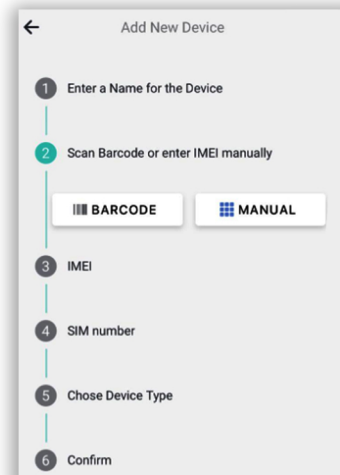


Tap on Devices

Tap on ADD NEW DEVICE

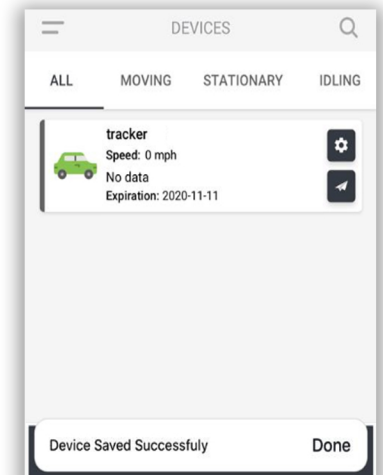


6 FILL THE FORM PROVIDED



Fill the form provided and tap on Save

7 SAVE YOUR DEVICE



Your Device has been added and activated

8

GPS LED

Solid green - Indicates that your device is searching for the GPS signal. Once the GPS signal has been established, the LED light will start flashing.



Status LED

Flashing status LED light indicates that your tracker has power and is operational.

If this is the first time you are using your tracker, it may take a while to establish a GPS lock. Take your device for a quick drive to allow it to establish a GPS satellite fix. Check that both LED lights on the tracker are flashing. Ensure the device is installed with the logo side facing up as this is where the directional GPS receiver is located.

9 Wiring Diagram



1- RED (power): permanent live power. supports from 10vdc up to 30vdc

2- BLACK (gnd): ground/earth/chassis

3- Yellow- (din1): dedicated input for ignition detection. must be connected to the ignition wire or an accessory that receives power with the ignition.

4- WHITE&ORANGE (dout1): provides negative signal output when activated. can be used to control external devices using a relay. the relay must be used to convert the negative signal to positive (e.g. starter motor cut-off). digital output can be activated or deactivated remotely by using the "send command" section on gpslive.

5- GREY (ain1): measures exact live voltage of an external device. (e.g. generator / leisure battery)

10 Installation

We recommend the installation to be carried out by a professional auto electrician. The device should be connected to a permanent live feed.

If you only require location information, simply connect the RED - Power and BLACK - Ground cables only. The Input and output wires are optional.

The device should be installed with the logo side facing up as this is where the directional GPS receiver is located.



This way up

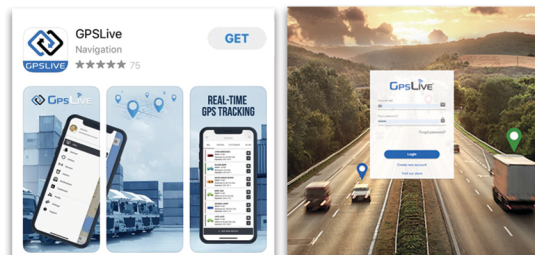
Do not install the device below thick metal surfaces as this will block the satellite signal. (e.g. inside the engine bay or the boot). Ideal installation places are under the front dashboard or behind the glove box.

11

Accessing your account

To access your account please visit: WWW.GPSLIVE.CO.UK or get our free to download app on Google Play or Apple App Store

Please use the details below to log in to your account. You can change your password once you have logged in to your account.

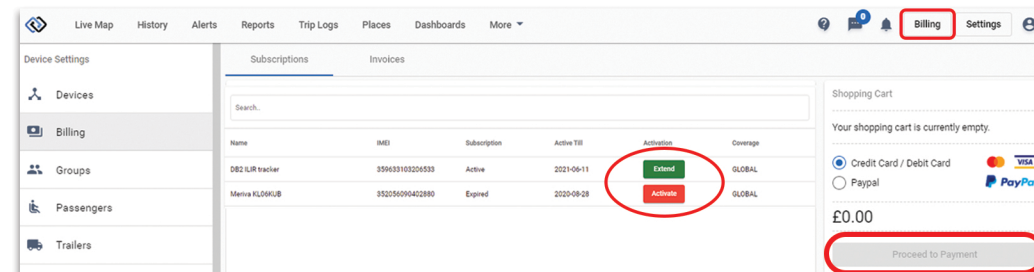


Your login details are going to be displayed here if you have purchased your tracker with service top-up.

12

How do I extend my subscription?

Visit WWW.GPSLIVE.CO.UK, log in and follow the instructions below:



Click on Billing
In the top right corner

Click on Activate/Extend
on the device you wish to
activate or extend

Proceed to the
payment
screen

Ideal location for your tracker

