

Follow the steps in this guide before you install the tracker

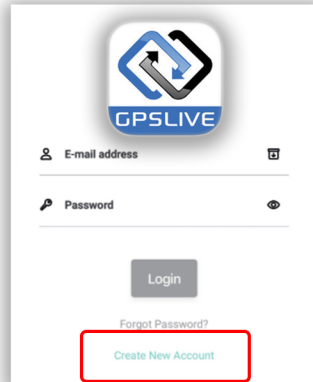
1 LOCATE THE IMEI NUMBER



The IMEI number will be printed on the box.

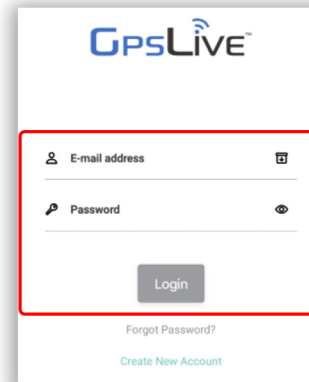
If you are an existing user, log in to your GPSlive account and continue to step number 5.

2 REGISTER YOUR ACCOUNT



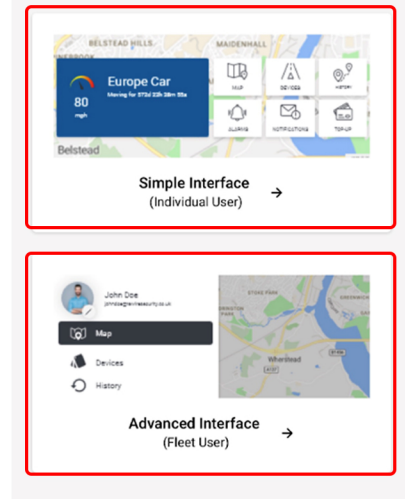
Download the GPSLIVE app from the Apple App Store or Google Play store. Open the app and tap on "Create New Account". Enter your email address and tap on "Register".

3 ACCESS YOUR ACCOUNT



Check your email inbox/spam for an email from GPSLIVE which will contain your username and password. Open the GPSLIVE app and log in using the username and password provided in the email.

4 SELECT YOUR INTERFACE



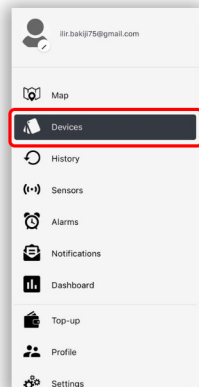
This can be changed in settings at any time.

5 ADD YOUR DEVICE

Advanced Interface

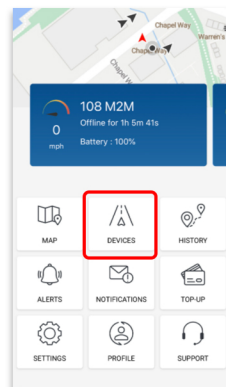


Tap on menu button in the top left corner



Tap on Devices

Simple Interface

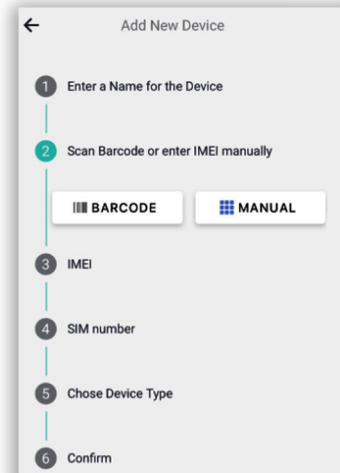


Tap on Devices

Tap on ADD NEW DEVICE

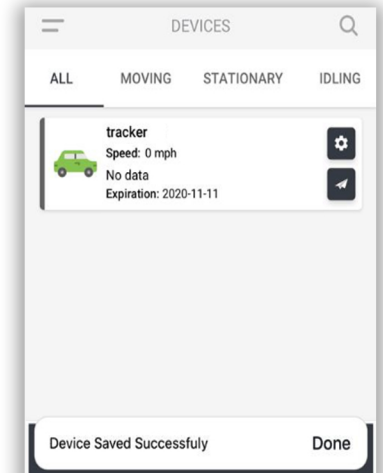


6 FILL THE FORM PROVIDED



Fill the form provided and tap on Save

7 SAVE YOUR DEVICE



Your Device has been added and activated

Installation Guide

WARNING

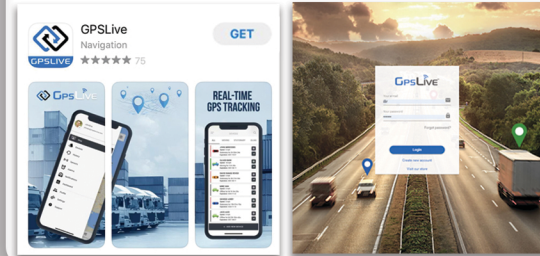
YOUR DEVICE MUST BE ADDED TO YOUR ACCOUNT BEFORE THE INSTALLATION TAKES PLACE. PLEASE FOLLOW THE INSTRUCTIONS ON THE REVERSE OF THIS USER GUIDE AND THEN INSTALL THE DEVICE.

Accessing your account

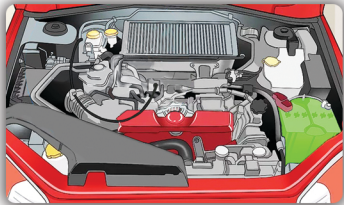
To access your account please visit:
WWW.GPSLIVE.CO.UK
or get our free to download app on
Google Play or Apple App Store

Please use the details below to log in to your account. You can change your password once you have logged in to your account.

Your login details are going to be displayed here if you have purchased your tracker with service top-up.



Follow the steps below for installation



Locate the battery and wipe it using the wipe provided with the unit



Install the tracker with the sticker facing up and in a horizontal position



Install the tracker, peel the sticker and push onto the battery firmly.

Status LED



GPS LED

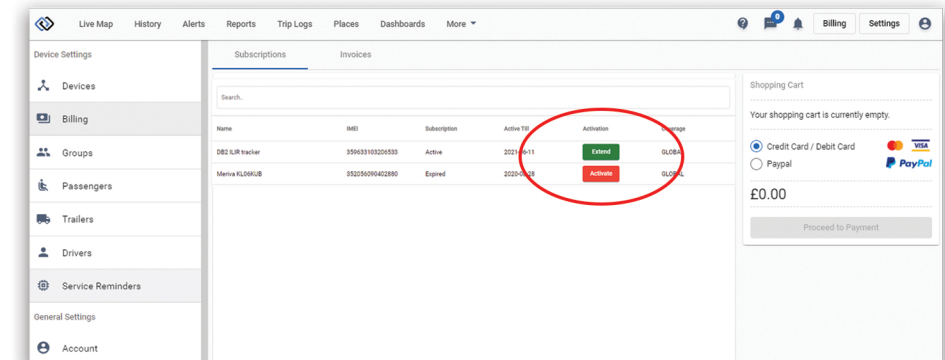
Flashing Fast - Indicates that your device is searching for the GPS signal. Once the GPS signal has been established, the LED light will start flashing slowly

Solid status LED light indicates that your tracker has power and is operational.

If you just installed the tracker, it may take up to 10 minutes to establish an initial GPS fix. If you take your vehicle for a drive, it will allow it to establish a GPS satellite fix faster.

How do I extend my subscription?

Visit WWW.GPSLIVE.CO.UK and follow the instructions below:



Click on Billing
In the top right corner

Click on Activate/Extend
on the device you wish to
activate or extend

Proceed to the
payment
screen

! IF YOUR SUBSCRIPTION RUNS OUT, YOUR VEHICLE WILL NOT BE PROTECTED AGAINST THEFT AND TRACKING WILL BE DISABLED DURING THIS PERIOD. !