

User Manual V1.0



RX-3 LITE

BODY WORN CAMERA

Introduction

Thank you for purchasing the RX3-Lite professional body-worn CCTV camera system. This guide details how to operate, configure and download data from the RX-3 Lite camera. Please keep this guide for future reference.

Charging

Before using the camera for the first time, the internal Li-ion battery needs to be charged for 4-5 hours. To charge the camera, place the unit in the charging dock and connect to the mains using the USB cable and mains charger supplied with the camera.



Software Installation

The latest version of the software for the RX3-Lite is available on www.rewiresecurity.co.uk/download. Once downloaded extract the rewiresecurity.exe file on to your computer's desktop. Once done follow the steps below to install the camera software. Note: the RX3-Lite is not Mac compatible.

1. Double click the newly downloaded rewiresecurity.exe installation file to start the camera software installation.
2. The application installer will check if the necessary framework is installed on your computer. If you are prompted to install '.NET Framework' please install it before you proceed with the camera software installation. The installation can take a few minutes. Once complete please rerun the rewiresecurity.exe to proceed.
3. If prompted about an 'unknown application' click Yes/OK to continue. The camera software will be automatically installed on your system.

You can find a shortcut to the application on your desktop.

Downloading Data & Configuration

To download recorded data and configure the RX1-Lite body worn camera please follow the steps below.

1. Connect the camera to your computer while switched OFF using the supplied dock and USB cable.
Once connected the camera will switch on and beep once.
2. Open the 'Rewire Security' software, the software will detect the camera. Click 'Connect device'



3. You will now be prompted to enter the cameras password. The default password is **000000** . Once entered click "login".



4. Once logged in you will be able to access the camera storage and settings menus



Downloading Data & Configuration

Device Time: Sync the time & date on the camera from the computer's time. Click 'Get' to set the current time and 'Set' to save.

ID Set: Set a 5 character Device ID and a 6 character User ID to be stamped to all recorded files. Click 'Set' once complete.

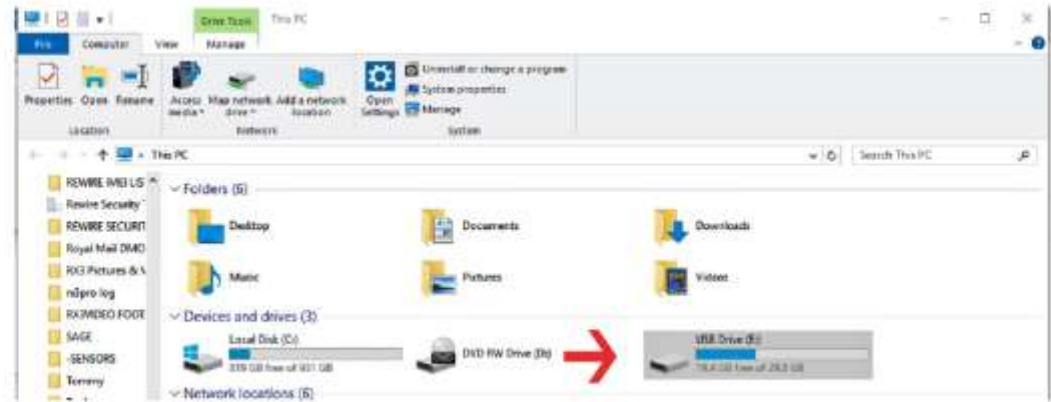
Change Password: Change the access password for the camera. The password must be 6 characters. Click 'Save Password' complete.

Access Video Files: Click to enable access recorded files from the camera as a 'Mass Storage Device'. Always safely eject the camera before dismounting the camera to avoid damaging the internal disk. Please see 'Step 5'.

Configuration: Click to access the camera's advanced configuration settings. These settings are explained in the 'Step 6'.

Exit: Once finished click 'Exit' to finish.

5. To view the video files stored in the camera's memory, click 'Access Video Files' the camera will restart as a USB drive and appear as an accessible storage device on the connected computer. To backup data drag and drop files to your computer.



6. To enter the advanced settings menu, click on the "configuration" button inside the main menu.



Resolution: Set the video resolution the camera records in.

Video Split Time: Set the time for how often the camera splits video files during continuous recording.

GPS/Glonass: Turn on/off GPS location logging.

Sound Volume: Set the volume of the camera internal speaker.

Advanced Configuration Menu

Video Quality: Set the sharpness of the recorded video.

Record Warning: Turn on/off audible alerts for recording.

Loop Record: Turn on loop record to allow the camera to overwrite recordings when full.

Time Zone: Set the GMT time zone the camera is being used in.

Example: Time Zone 1 for British summer time.

Once finished click 'Save And Exit' to save changes or 'Exit' to close without saving.

Specifications

Recording Quality: 1080P, 720P, 480P (H.264 MPEG4)

Casing: Toughened ABS Plastic Casing, Weatherproof IP65 Rated

Memory: 32GB Built-in (Anti Tamper)

File Split Time: Adjustable Between 3, 5, 10, 15, 30 minutes

Recording Time: 480P 13-14hrs

720P 8-9hrs

1080P 5-6hrs

Battery: 3.7v 2900mAh Rechargeable Lithium Battery

Battery Life: (Continuous Recording GPS Off)

480P 9-11hrs

720P 7-9hrs

1080P 4-6hrs

Charge Time: 4-6 hours

Connectivity: USB2.0 (Data Download & Charging)

Working Temperature: -10c - +60c @ max 95% humidity
(non condensing)

Dimension: 85mm x 56mm x 24mm

Weight: 130g

Compliance:CE, RoHs

Mount Options: KlickFast Dock Ready, Rotating Spring Loaded Clip. KlickFast Garment Mount (Included)

Other Features: Time & Date Stamp, Device ID. GPS coordinates embedded into Video. Vibration Feedback, Audio Feedback, Record Indicator, One Touch Record From Off, Custom Camera ID, User ID, GPS logging

Optional Accessories

Car Window Mount, Locking USB Power Bank Cable & All KlickFast Accessories

Notes of use

Always safely eject the camera before dismounting.

Always download and backup data between uses.

Never place the camera on or near strong magnetic fields.